

clever



Room 4 44 Headland Park

, Plymouth, PL4 8HT

£585 Per month

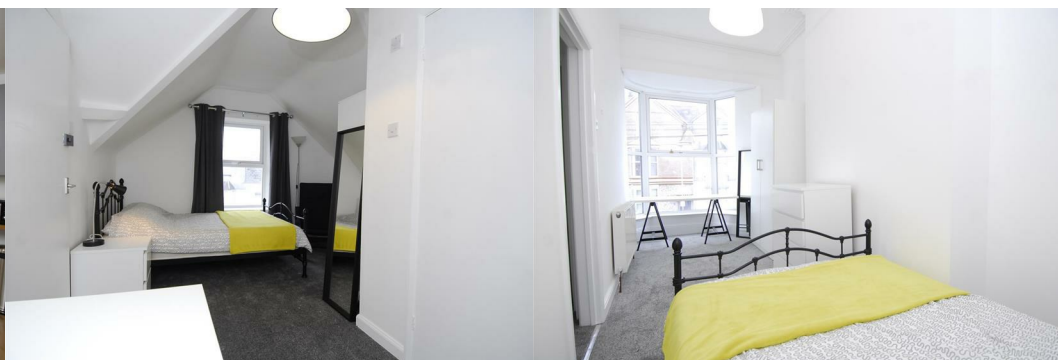


Welcome to this impressive seven-bedroom modern shared house located in the vibrant area of Headland Park, Plymouth. This property is perfect for those seeking a contemporary living space with ample room for comfort and convenience.

Each of the seven bedrooms is thoughtfully designed with en-suite facilities, ensuring privacy and ease for all residents. The modern lounge serves as a welcoming communal area, ideal for relaxation and socialising with housemates. The property comes fully furnished, allowing for a seamless move-in experience without the hassle of purchasing additional furniture.

Situated close to the city centre, this house offers easy access to a variety of local amenities, including shops, restaurants, and public transport links, making it an excellent choice for both students and professionals alike.

This modern shared house is not just a place to live; it is a community where you can enjoy the company of others while having your own personal space. If you are looking for a stylish and convenient living arrangement



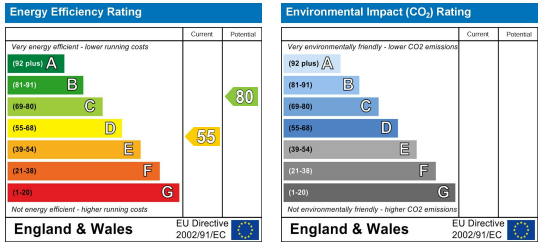
Area Map



Floor Plans



Energy Efficiency Graph



These particulars, whilst believed to be accurate are set out as a general outline only for guidance and do not constitute any part of an offer or contract. Intending purchasers should not rely on them as statements of representation of fact, but must satisfy themselves by inspection or otherwise as to their accuracy. No person in this firm's employment has the authority to make or give any representation or warranty in respect of the property.